

Part no.	315-XXXXXXXX-XXX
Product name	簡易使用指南/
Spec	L148*W420mm/2折/銅版紙100P/雙面/Pantone 647 C
Designer	Emily
Color	 Pantone 647 C

GlucoRx
HCT TD-4279
BLOOD GLUCOSE MONITORING SYSTEM



Quick Start User Guide
For Ketone Measurement

PLEASE READ THIS
 QUICK USER GUIDE AND
 OWNER'S MANUAL THOROUGHLY
 BEFORE USING THE
 PRODUCT

Distributed by GlucoRx Ltd.
 4 Wintonlea, Monument Way West,
 Woking, Surrey, GU21 5EN, UK
 Website: www.glucoRx.co.uk
 Customer care number: 01483 755133

TaiDoc Technology Corporation
 B1-7F., No. 127, Wugong 2nd Rd.,
 Wugu Dist., New Taipei City 248, Taiwan (R.O.C.)
 MedNet GmbH
 Borkstraße 10, 48163 Münster, Germany

CE 0123
 IVD
 For self-testing.
 315-XXXXXXX-XXX

1 Hand wash the puncture site with warm water and dry thoroughly before testing.

2 Twist and pull off the cap.

3 Insert a lancet and twist the protective disk off it.

4 Put it back.

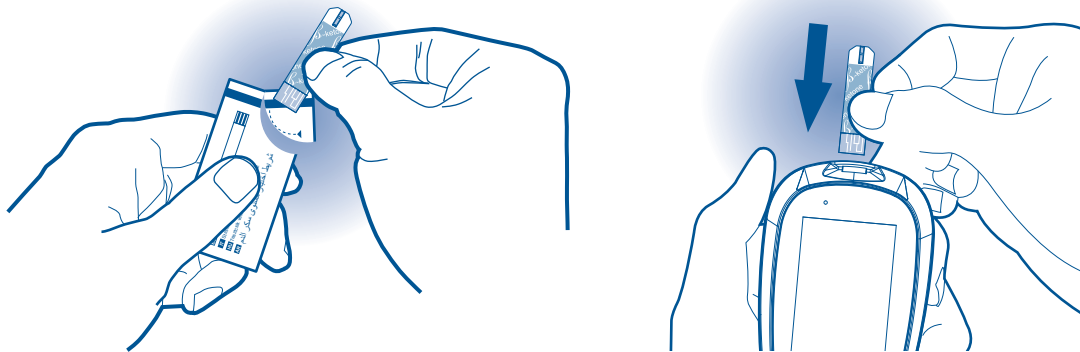
5 Twist the cap to close it until you hear the click.

6 Select the depth of penetration.

7 Pull the cocking control back until it clicks.

8

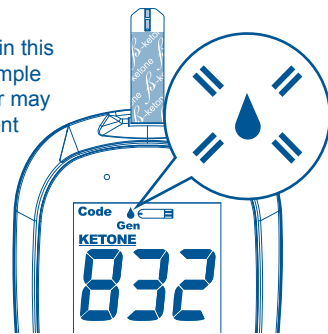
Take a test strip out and then insert it to turn on the meter.



9

A flashing "Blood drop symbol" will display on the meter.

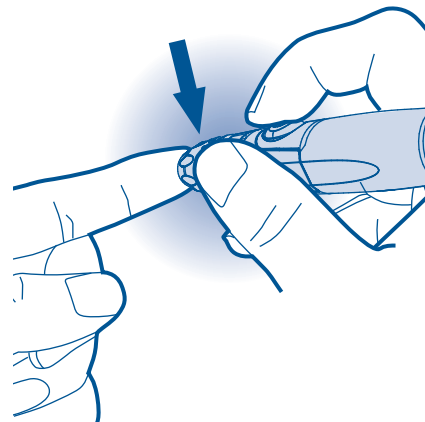
The code used in this guide is an example only; your meter may display a different code.



Three-digit coding required for Ketone test only

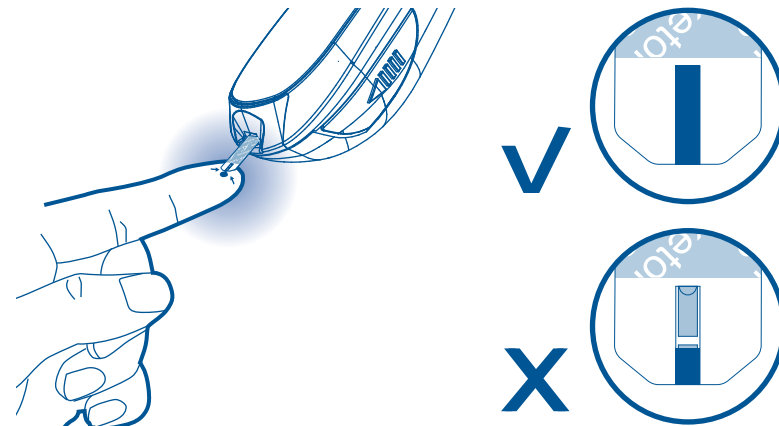
10

Press the release button to obtain a drop of blood.



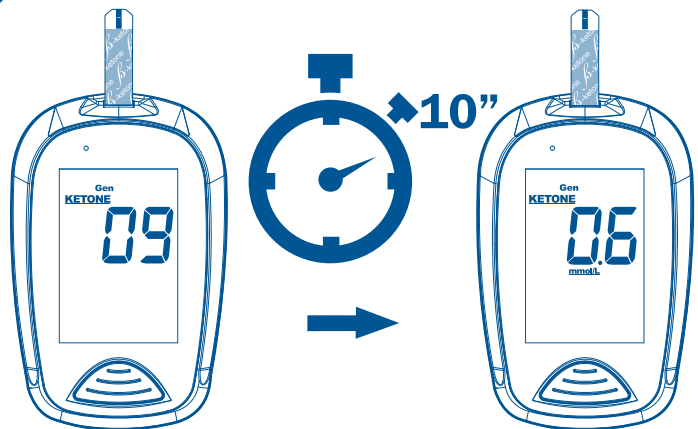
11

Apply your blood sample until the confirmation window is completely filled.



12

After the meter counts to 0, your test result will display on the meter.



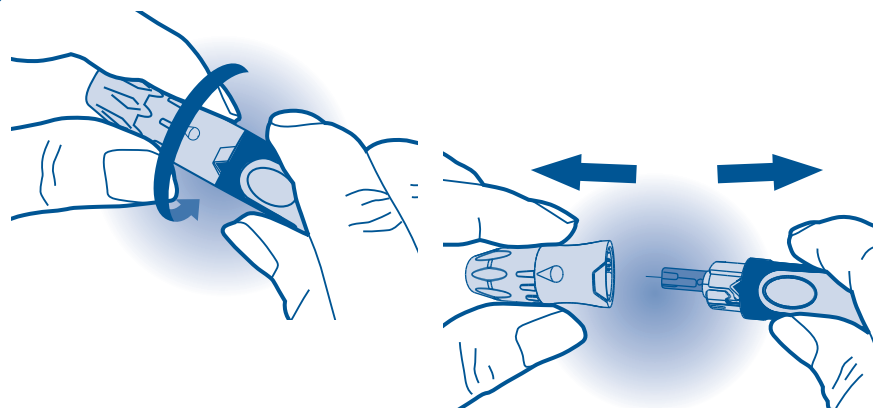
13

Dispose the used strip carefully.



14

Twist the cap to the left to open it.



15

Dispose the used lancet carefully. Never share a lancet or the lancing device. GlucoRx Lancing device is for self-use only.

