


| | |
|--------------|---|
| Part no. | 315-4141100-XXX |
| Product name | 簡易使用指南/GlucoRx Nexus mini ultra/英文 |
| Spec | L148*W420mm/2折/銅版紙100P/雙面/Pantone 647 C |
| Designer | JF |
| Color |  Pantone 647 C |

Glucorx
Nexus

BLOOD GLUCOSE
MONITORING SYSTEM



Quick Start User Guide

PLEASE READ THIS
QUICK USER GUIDE AND
OWNER'S MANUAL THOROUGHLY
BEFORE USING THE
PRODUCT

Distributed by
Glucorx Ltd
4 Wintonlea, Monument Way West
Woking, Surrey, GU21 5EN, UK
www.glucorx.co.uk

TaiDoc Technology Corporation
B1-7F, No. 127, Wugong 2nd Rd.,
Wugu Dist., New Taipei City 248, Taiwan (R.O.C.)
MedNet GmbH
Borkstraße 10, 48163 Münster, Germany

For self-testing.
CE **0123**
315-4141 100-003

1 Hand wash the puncture site with warm water and dry thoroughly before testing.

2 Twist and pull off the cap.

3 Insert a lancet and twist the protective disk off it.

4 Put it back.

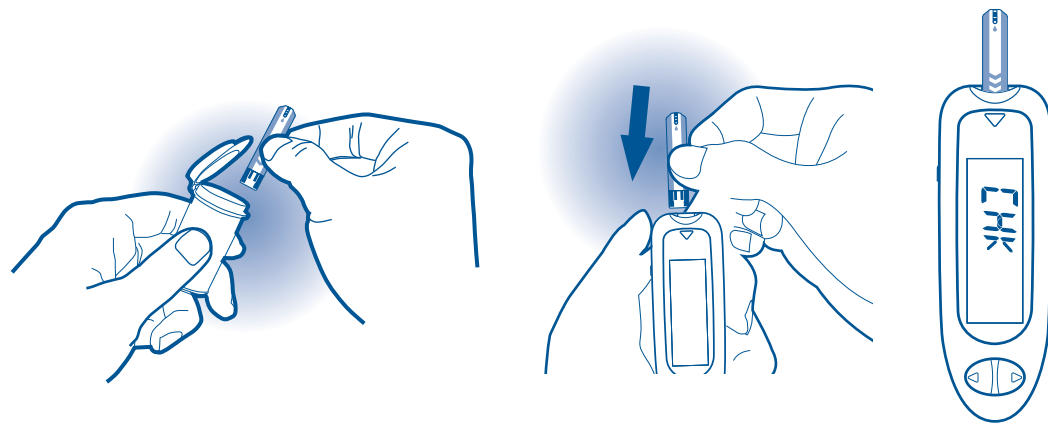
5 Twist the cap to close it until you hear the click.

6 Select the depth of penetration.

7 Pull the cocking control back until it clicks.

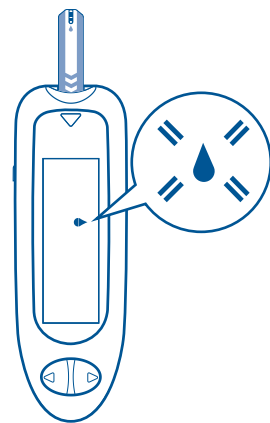
8

Take a test strip out and then insert it to turn on the meter.



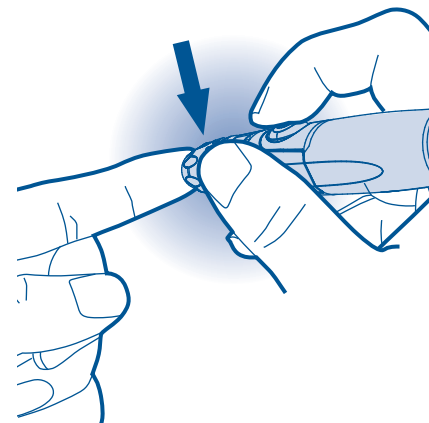
9

A flashing "Blood drop symbol" will display on the meter.



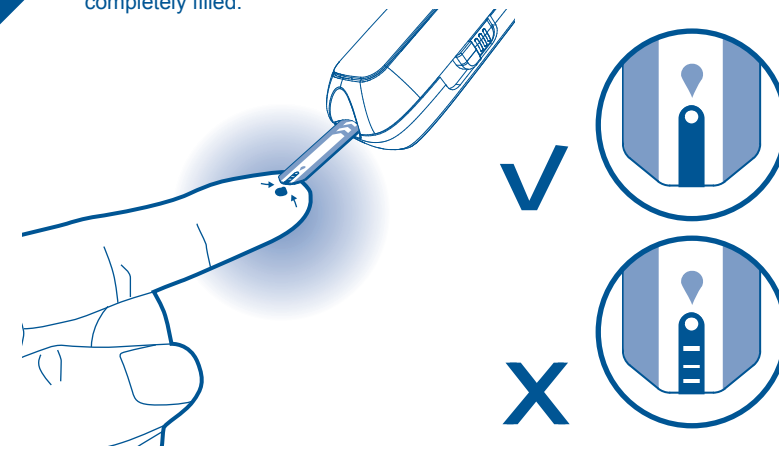
10

Press the release button to obtain a drop of blood.



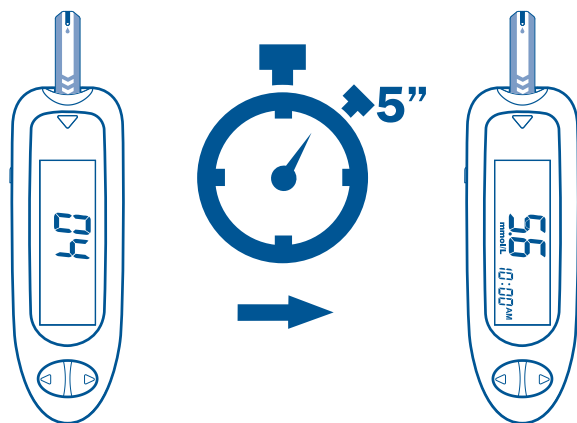
11

Apply your blood sample until the confirmation window is completely filled.



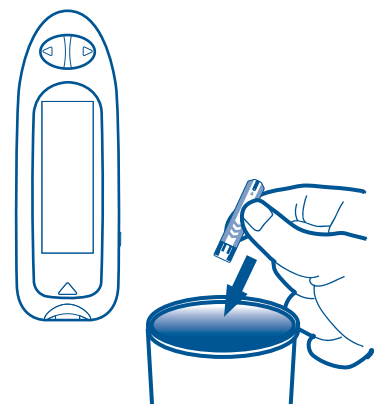
12

After the meter counts to 0, your test result will display on the meter.



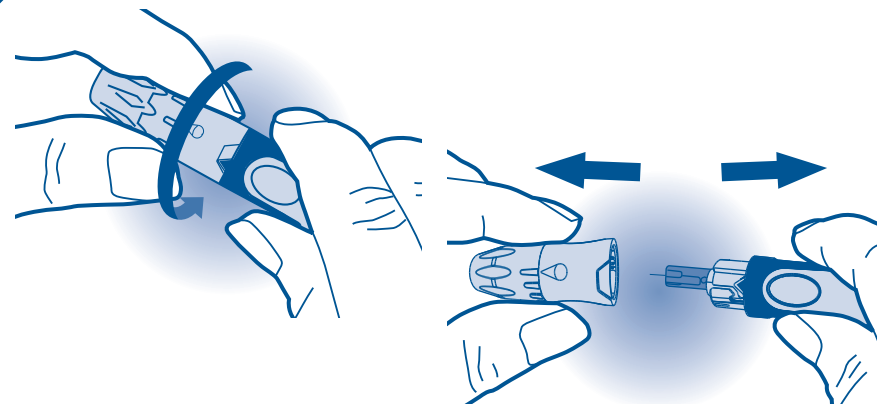
13

Dispose the used strip carefully.



14

Twist the cap to the left to open it.



15

Dispose the used lancet carefully. Never share a lancet or the lancing device. GlucoRx Lancing device is for self-use only.

