

GlucoRx Quality Diabetes Care **Lancing device**

Adjustable Lancing Device With Ejector

Instructions for Use

Please read carefully all instructions before testing.



This cap is for fingertip testing only.

This clear cap is an optional one for testing on sites other than the fingertip. Do not use the clear cap for fingertip testing.

Clear caps can be ordered from GlucoRx by calling 01483 755133 or e-mailing orders@glucorx.co.uk

GlucoRx Lancing device provides a safe and convenient way to obtain a drop of capillary blood. The device has 6 penetration depth settings, numbered from 1 to 6, to match different types of skins. Smaller numbers are for a shallower puncture and the larger numbers are for a deeper puncture. Shallower punctures work for children and most adults. Deeper punctures work well for people with thick or callused skin. The capability to puncture on Alternative (non-fingertip) Sites is provided.

CAUTION: To reduce the chance of infection:

- NEVER SHARE A LANCET OR LANCING DEVICE WITH ANOTHER PERSON, INCLUDING FAMILY MEMBERS.

- Make sure to wash the puncture site with soap and warm water before sampling.

- Always use a new, sterile lancet. Lancets are for single use only. Reuse lancets can dull or bend the tip of the lancet, causing damage to your skin, scarring and greater pain.

- For single person use only. Not for clinical or multi-patient use.

- Keep your lancing device clean. Hand lotions, oils, dirt and debris on or in the lancing device may prevent the device from working correctly.

Keep the lancing device away from young children.

The lancing device, cap, lancets and lancet protective covers are choking hazards.

Preparing your lancing device



1. Remove cap

Carefully remove the cap from the lancing device.



2. Insert lancet

Insert the lancet into the lancet holder, push until the lancet comes to a complete stop inside the device.



3. Remove lancet protective cover
Twist the lancet protective cover until it separates from the lancet. **Save the protective cover for lancet removal and disposal.** Please refer to Removing and disposing of the used lancet.



4. Replace cap

Push the cap straight onto the pen. Turn until it is on tight. Be careful not to touch the exposed needle on the lancet.



5. Adjust the depth setting

For fingertip lancing, adjust the depth of puncture setting if necessary. This device has 6 adjustable depth settings, and you may choose to start with depth setting 3 or 4, if depth setting 3 or 4 does not produce enough blood to get an accurate result with your meter, please use a deeper setting (depth setting 5 or 6). If depth setting 3 or 4 does produce enough blood, a shallower depth setting (depth setting 1 or 2) may produce enough blood with less pain.



6. Cock the lancing device

Pull the cocking handle out until it clicks. If it does not click, it may already have been cocked when you inserted the lancet.



7. Washing hands

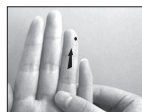
Prior to sampling blood, wash your hands and the sample site with soap and warm water. Rinse and dry your hands completely.

Lancing fingertips



1. Puncture your finger

Press the lancing device firmly against the side of your fingertip to be lanced. Press the release button. Remove the lancing device from your finger.



2. Get a round drop of blood

Gently massage from the base of the finger to the tip of the finger until a round drop of blood forms on your fingertip. Avoid smearing the blood sample.

Follow the instructions in your glucose meter's User Guide for proper application.

Removing and disposing of the used lancet



1. Remove cap

Carefully remove the cap from the lancing device. Be careful not to touch the exposed needle on the lancet.



2. Cover the exposed lancet tip

Before removing the lancet, place the lancet protective cover on a hard surface, then carefully stick the lancet tip into the protective cover as shown.



3. Pull the cocking handle out until it clicks. If it does not click, it may already have been cocked when you inserted the lancet.



3. Eject the lancet

Slide the ejector forward until the lancet comes out of the lancing device. Discard the used lancet properly in a puncture resistant container. Return the ejector to its back position.



4. Hold the clear cap down against the top of test site. Press the release button and then apply steady pressure to the lancing device until an adequate sample of blood is viewed through the clear cap.

Note: To bring fresh blood to the surface of the test site, before testing, you may rub the test site vigorously for a few seconds until you feel it getting warm.



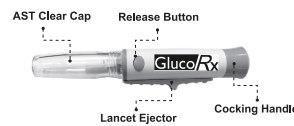
4. Replace cap

Place the cap back onto the device; Push the cap straight onto the pen. Turn until it is on tight.



5. Carefully lift the lancing device straight up; be careful not to smear the blood sample on your test site. Sample the blood drop with your meter and test strip.

Lancing Alternate Test Sites

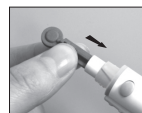


Important - If you are considering using sites other than fingers for obtaining a sample of blood for testing, please:

- Consult your physician.
- Make sure your glucose meter is appropriate for AST.

This Alternative Site Blood Sampling Clear Cap is intended to be used in conjunction with this lancing device to obtain a blood sample from an alternative site for blood glucose testing. **Do not share the AST clear cap with anyone.**

Refer to your glucose meter's instructions for use for appropriate locations and conditions for blood glucose testing at alternative sites (forearm, upper arm, or base of thumb only).



1. Insert lancet

Insert the lancet into the lancet holder, push until the lancet comes to a complete stop inside the device.



2. Attach the Alternative Site Blood Sampling Clear Cap instead of depth adjustable cap. **There is no need to adjust the depth of puncture setting with the clear cap.**

Cleaning and disinfecting the lancing device

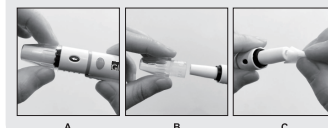
For cleaning of the lancing device, please wipe the lancing device with a soft cloth dampened with water and mild detergent. **Do Not immerse the lancing device in any liquid.**

For disinfection of the lancing device, please prepare a solution of one part household bleach to nine parts water. Wipe the lancing device with a soft cloth dampened with this solution. Immerse the **cap only** in this solution for 30 minutes. After disinfecting, rinse briefly with water and allow both to air dry.

Thoroughly Cleaning Feature

If any blood gets onto the inside surface of depth adjustable cap, rotate the clear tip of depth adjustable cap to "I" setting (Fig. A); Pull out the clear tip of the cap (Fig. B) and wipe the cap using a soft cloth dampened with the above-mentioned disinfecting solution (Fig. C).

Note: When attach the clear tip back, please make sure the depth indicator is on "H" setting (Fig. A), and then adjust to the suitable depth for you.



Distributed by:
GlucoRx Ltd.
Unit 1C Henley Business Park,
Pirbright Road, Guildford, Surrey,
GU3 2DX, UK

Manufacturer:
SteriLance Medical (Suzhou) Inc.
No.68 Litang Road, Xiangcheng,
Suzhou, 215133, China

EMERGO EUROPE
Prinsessegracht 20, 2514 AP
The Hague, The Netherlands