

GlucorRx

Nexus  
Voice

TD-4280  
BLOOD GLUCOSE  
MONITORING SYSTEM



## Quick Start User Guide

TaiDoc Technology Corporation  
B1-7F., No. 127, Wugong 2nd Rd., Wugu Dist.,  
New Taipei City 248, Taiwan (R.O.C.)  
www.taidoc.com

MedNet GmbH  
Borkstraße 10, 48163 Münster, Germany

Distributed by  
**GlucorRx Ltd.**  
4 Wintonlea, Monument Way West  
Woking, Surrey, GU21 5EN, UK  
Website: www.glucorrx.co.uk  
Call centre number: 01483 755133

CE 0123 IVD i

For self-testing.

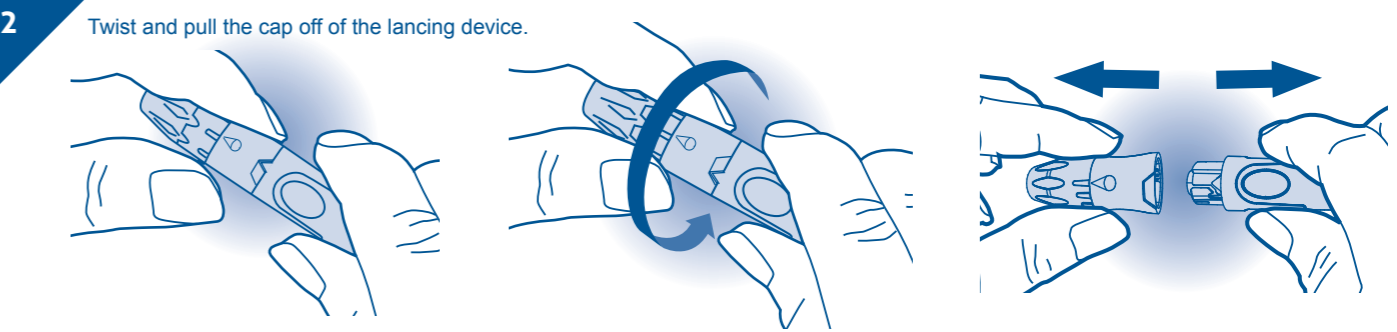


315-4280100-007

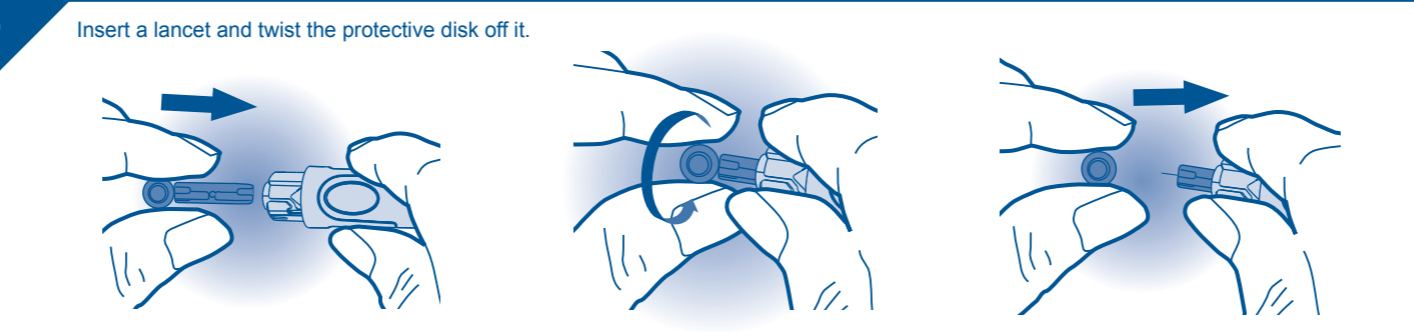
**1** Hand wash the puncture site with warm water and dry thoroughly before testing.



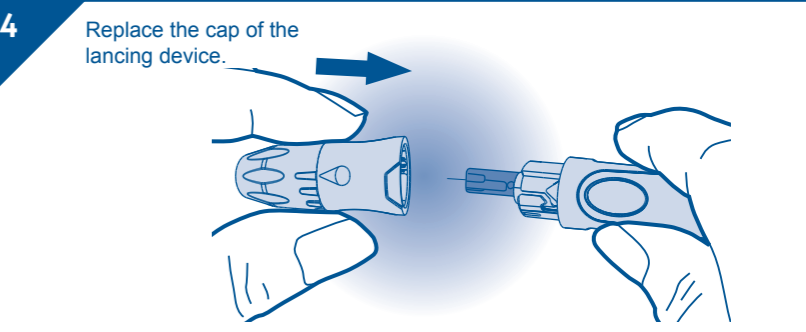
**2** Twist and pull the cap off of the lancing device.



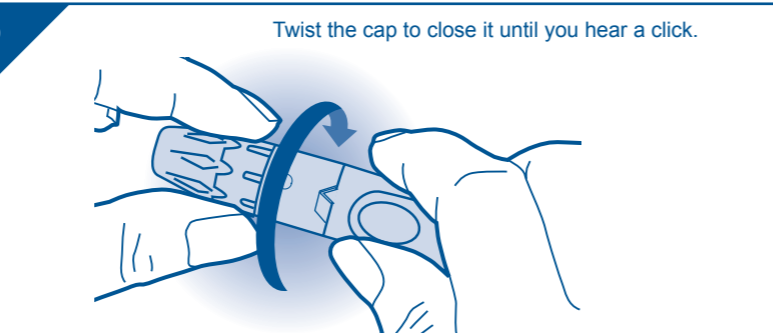
**3** Insert a lancet and twist the protective disk off it.



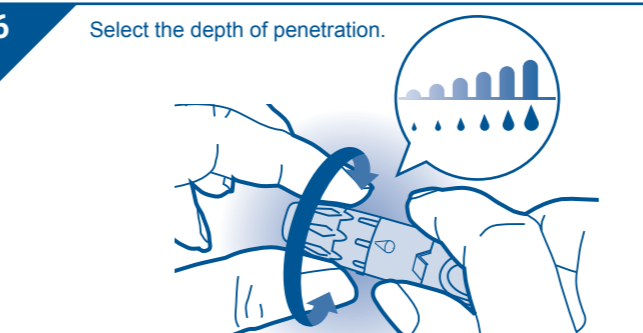
**4** Replace the cap of the lancing device.



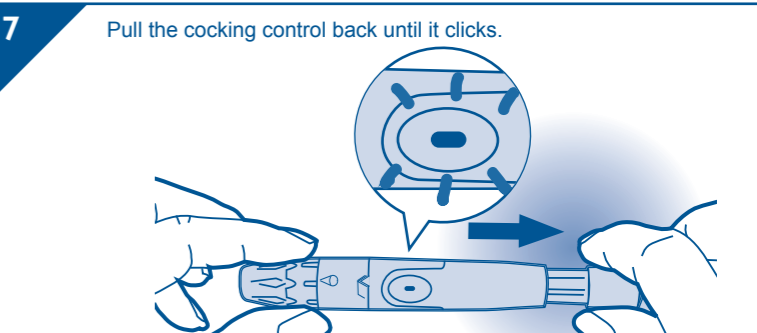
**5** Twist the cap to close it until you hear a click.



**6** Select the depth of penetration.

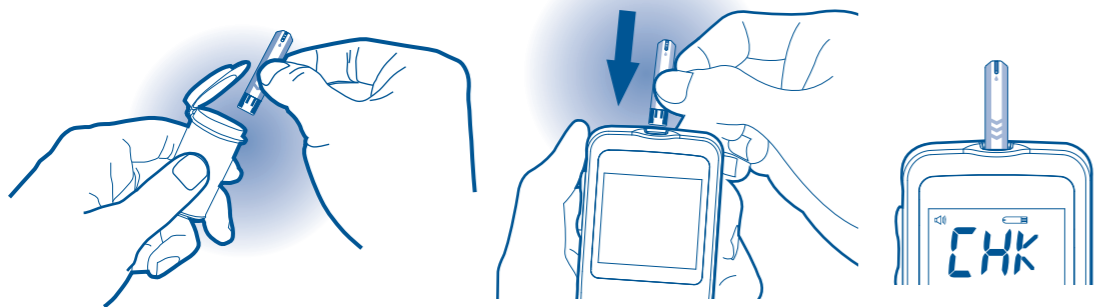


**7** Pull the cocking control back until it clicks.



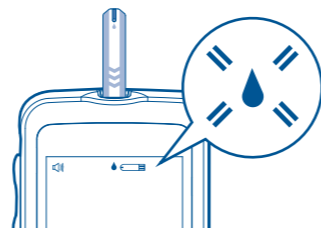
8

Take a test strip out and then insert it to turn on the meter.



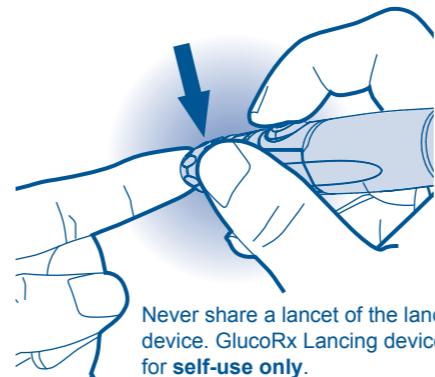
9

A flashing "⦿" will display on the meter screen.



10

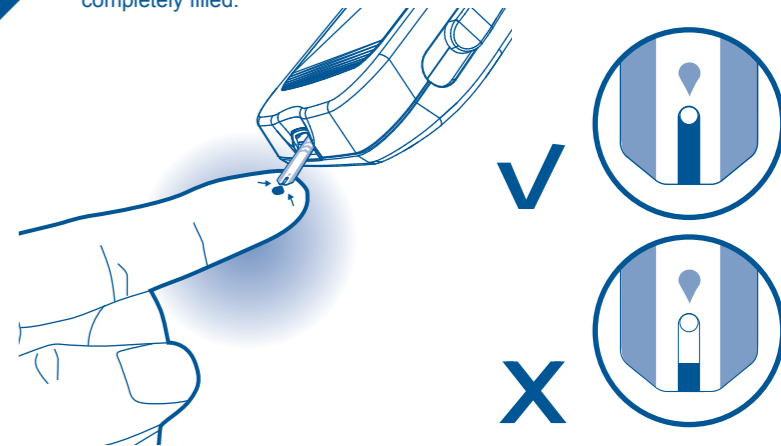
Press the release button on the lancing device to obtain a drop of blood. Discard the first drop and gently squeeze the punctured area to obtain another drop of blood for testing.



Never share a lancet of the lancing device. GlucoRx Lancing device is for **self-use only**.

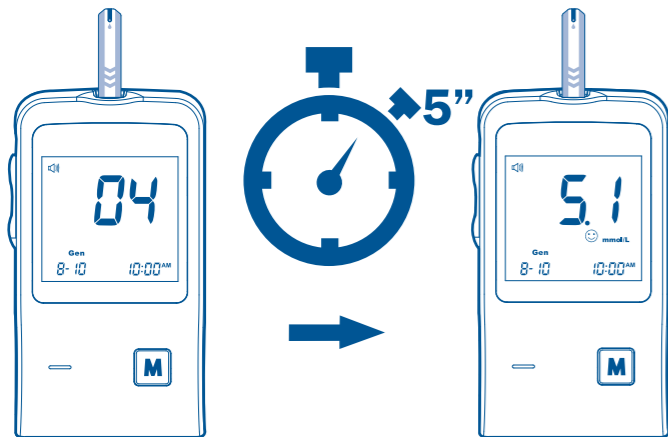
11

Apply your blood sample until the confirmation window is completely filled.



12

After the meter counts to 0, your test result will display on the screen.



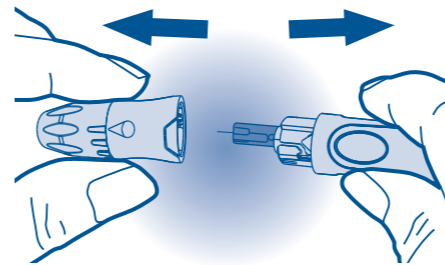
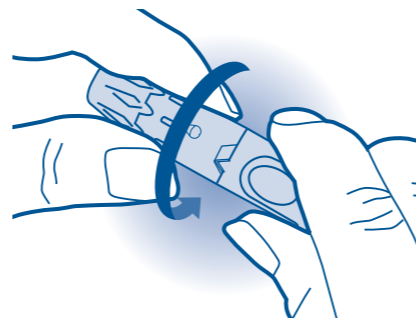
13

Dispose the used strip carefully.



14

Twist the cap of the lancing device to the left to open it.



15

Dispose the used lancet carefully.

