

GlucoRx
Nexus
mini

TD-4287
BLOOD GLUCOSE
MONITORING SYSTEM

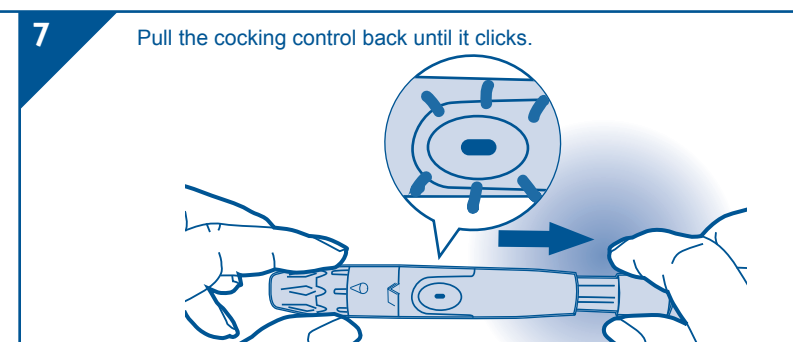
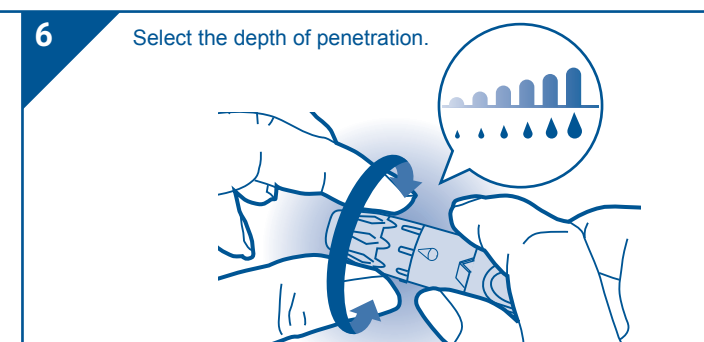
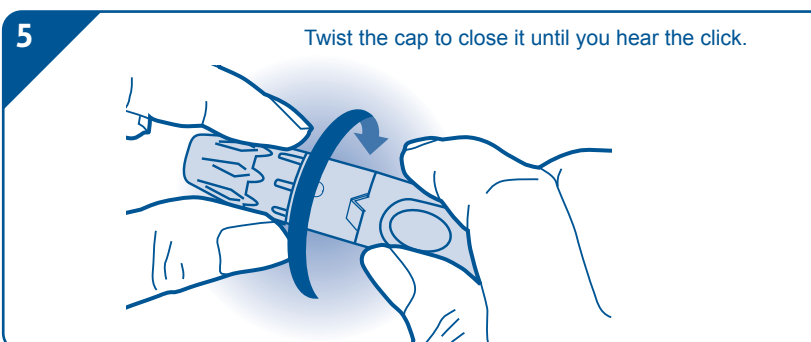
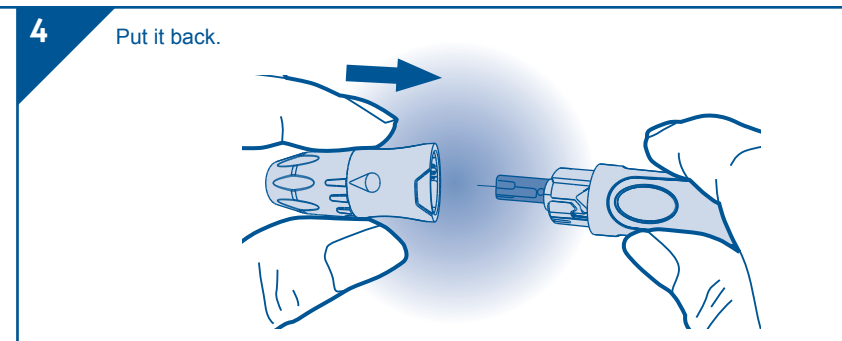
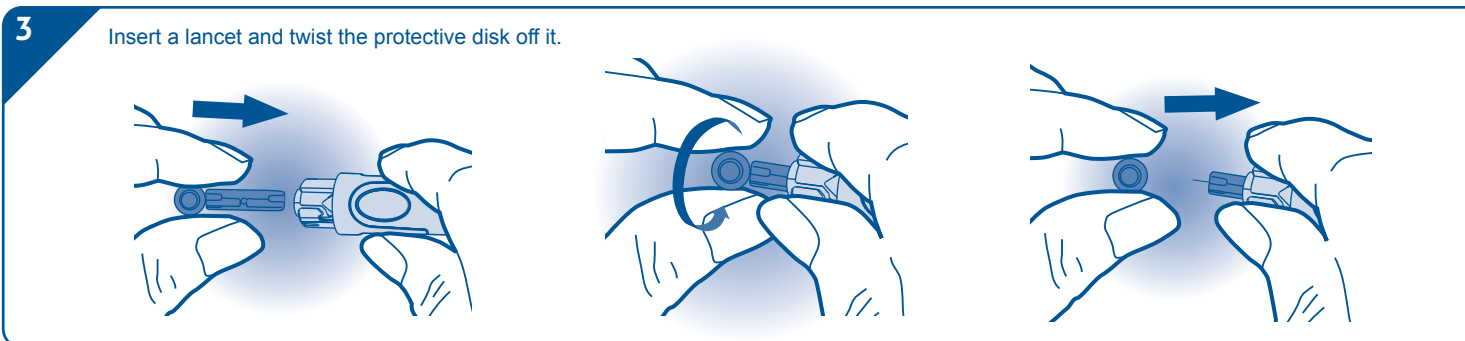
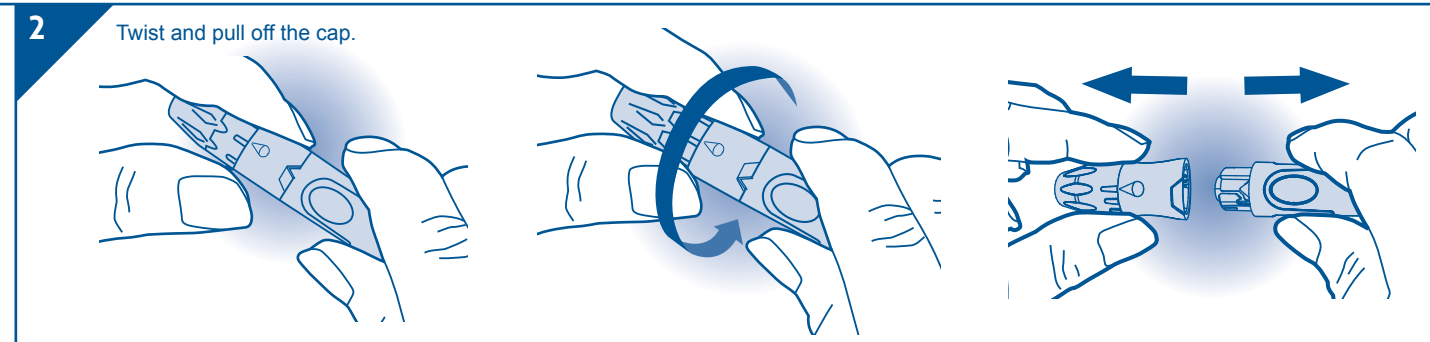
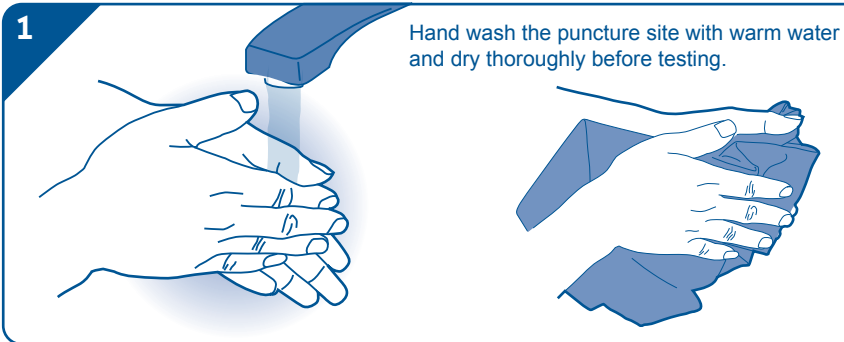


Quick Start User Guide

TaiDoc Technology Corporation
B1-7F., No. 127, Wugong 2nd Rd.,
Wugu Dist., New Taipei City 248, Taiwan (R.O.C.)

EC REP MedNet GmbH
Borkstraße 10, 48163 Münster, Germany

CE 0123 For self-testing.
315-4287200-001



8 Take a test strip out and then insert it to turn on the meter.

9 A flashing " Blood drop symbol " will display on the meter.

10 Press the release button to obtain a drop of blood.

11 Apply your blood sample until the confirmation window is completely filled.

12 After the meter counts to 0, your test result will display on the meter.

13 Dispose the used strip carefully.

14 Twist the cap to the left to open it.

15 Dispose the used lancet carefully. Never share a lancet of the lanceting device. GlucoRx Lancing device is for self-use only.