

Part no.	315-4279300-XXX
Product name	簡易使用指南/GlucoRx Nexus & GlucoRx Nexus Blue/英文(DiME)
Spec	L148*W420mm/2折/銅版紙100P/雙Pantone647C
Designer	JF
Color	 Pantone 647 C

Gluco/Rx
& Nexus
TD-4277

Gluco/Rx
Nexus Blue
TD-4277B

**BLOOD GLUCOSE
MONITORING
SYSTEMS**

Quick Start User Guide

For Blood Glucose Measurement

Distributed by GlucoRx Ltd.
4 Wintonlea, Monument Way West, Woking, Surrey, GU21 5EN, UK
Website: www.glucorx.co.uk
Customer careline: 01483 755133

TaiDoc Technology Corporation
B1-7F, No. 127, Wugong 2nd Rd.,
Wugu Dist., 24888 New Taipei City, Taiwan

EC REF MedNet GmbH
Borkstraße 10, 48163 Münster, Germany

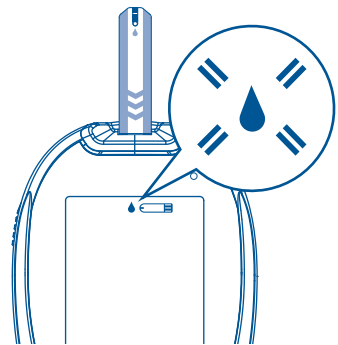
CE 0123 For self-testing.
IVD 315-4279300-005



- 1** Hand wash your puncture site with warm water and dry thoroughly before testing.
- 2** Twist and pull off the lancing device cap
- 3** Insert a lancet and twist the protective disk off it
- 4** Pull it back
- 5** Twist the cap to close it until you hear it click
- 6** Select your depth of penetration
- 7** Pull the cocking control back until it clicks
- 8** Take a test strip out and insert it to turn on the meter

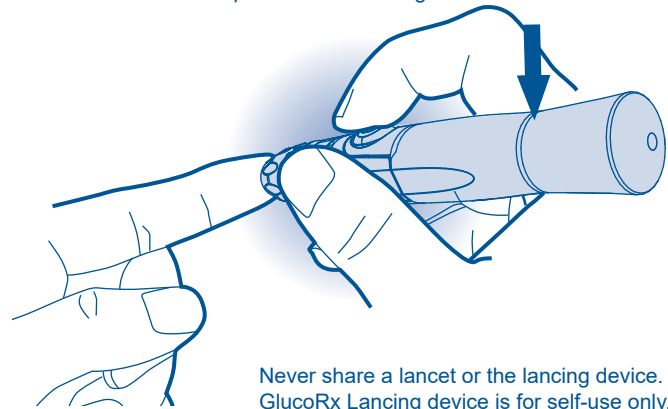
9

A flashing "Blood drop symbol" will display on the meter



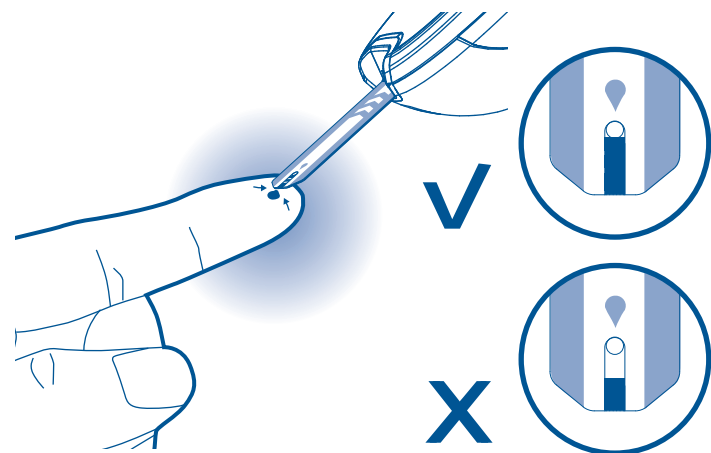
10

Press the release button on the lancing device to obtain a drop of blood. Discard the first drop and gently squeeze the punctured area to obtain another drop of blood for testing



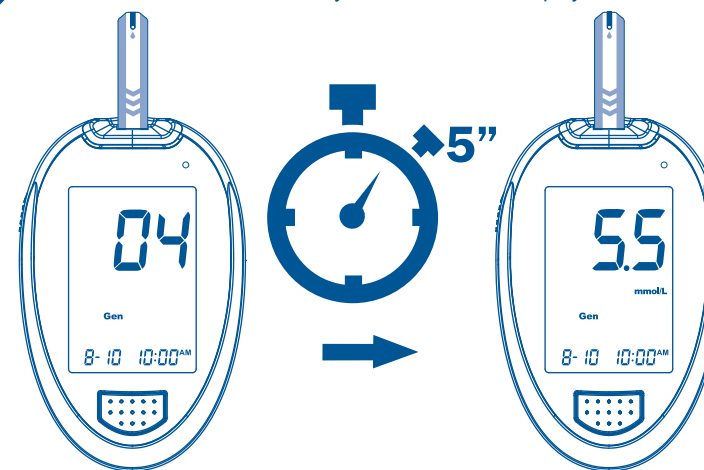
11

Apply your blood sample until the confirmation window is completely filled



12

After meter counts down to 0, your test result will display on screen



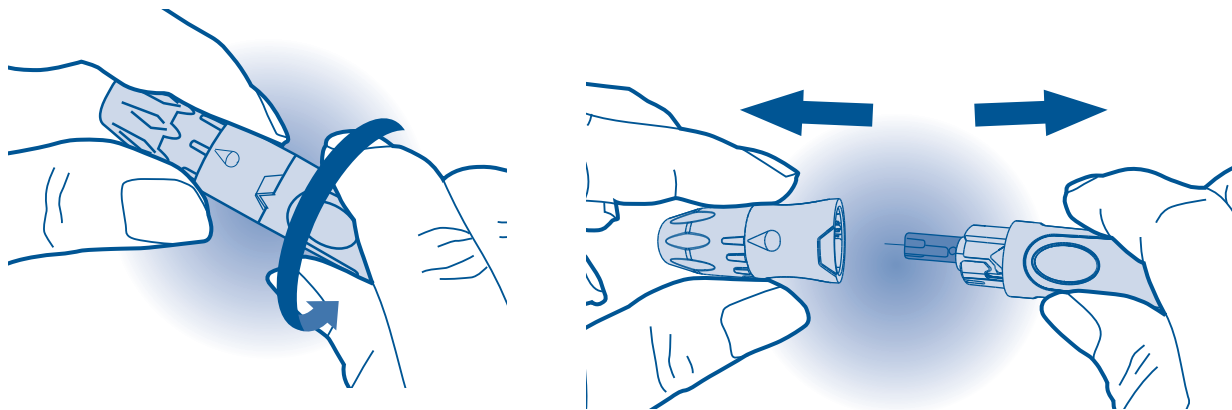
13

Dispose the used strip carefully



14

Twist the lancing device cap to the left to open it



15

Dispose the used lancet carefully

